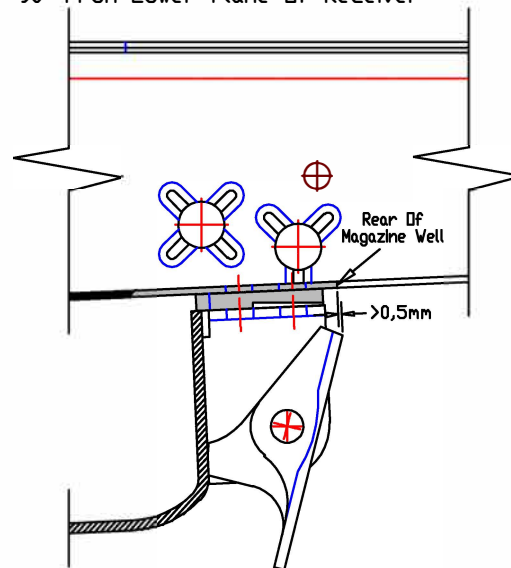
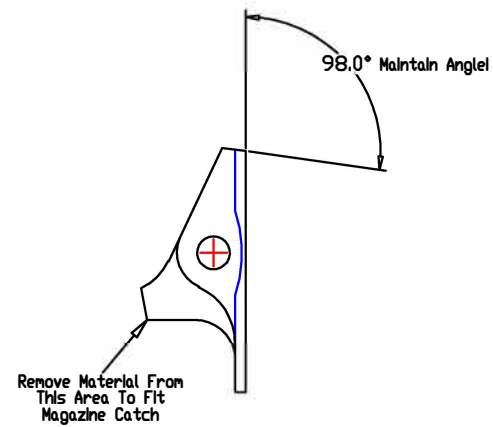
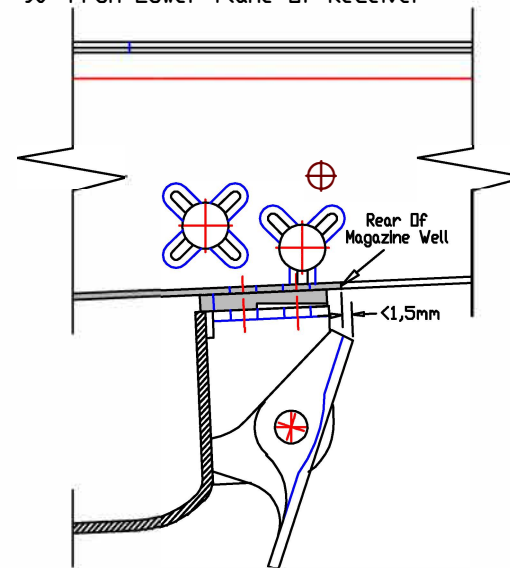


Ing. Robert Forkus

Magazine Catch Must Protrude More Than 0,5mm From Rear Of Magazine Well Measured 90° From Lower Plane Of Receiver



Magazine Catch Must Protrude Less Than 1,5mm From Rear Of Magazine Well Measured 90° From Lower Plane Of Receiver



Ing. Robert Forkus